

Biostep[™] Prestained Protein Marker

Catalog #	Description
180-6001	Biostep[™] Prestained Protein Marker, 500 μL

Product shipped at room temperature. Store for 6 months at 4°C or for 12 months at -20°C

Recommended Loading Volume:

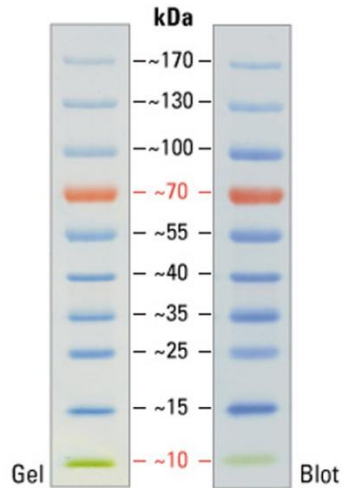
3~5 μ L per well (mini gels)

Loading buffer:

10mM DTT, 1mM EDTA, 33% (w/v) glycerol, 1mM NaN₃, 2% SDS and 62.5mM Tris, pH 7.5.

Description

- **Biostep[™] Prestained Protein Marker** is a mixture contains 10 sharp bands of 10kD(green), 15kD, 25kD, 35kD, 40kD, 55kD, 70kD(orange), 100kD, 130kD, and 170kD.



Information

- ◆ Do not heat the product above room temperature.
- ◆ Thaw the tube to reach room temperature and thoroughly mix before use.
- ◆ The product is provided in loading buffer, no need to dilute.

Applications

- Monitoring electrophoretic separation of SDS-polyacrylamide gel.
- Sizing of protein molecular weight.
- Verifying blot transfer efficiency.
- Locating a protein of interest.